

LD47

LOW GLARE INTERIOR/EXTERIOR WALL OR STEP LIGHT




CB | RLE | R+R | MOISTURE GUARD



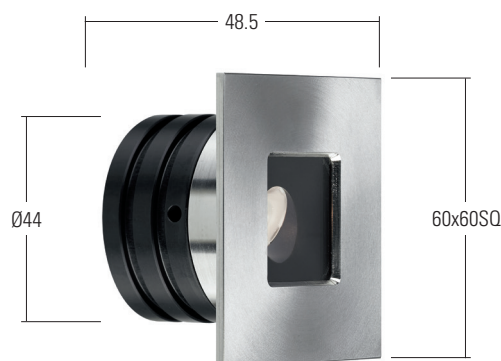
The LD47 has been updated with the latest LED technology and fitted with our new optics. The lens assembly is recessed and inclined by 20° for a floor wash illumination with minimal glare. This is a high-quality fitting with a machined 316 stainless steel bezel and black anodized body, for interior and exterior use. It has no visible fixings and the glass is fixed with a hidden gasket, so no unsightly glue line is visible. A choice of beam angles and colour temperatures are available. See LD48 for a version with a round bezel.

KEY FEATURES



- > LED and lens assembly recessed and tilted by 20° within a black anodised body for reduced glare
- > High quality machined bezel and body
- > Square and round versions available
- > Glass fixed with hidden gasket, so no unsightly glue line
- > No visible fixings. Options include spring fixing clips or O-rings and a first fix sleeve
- > Can be used for external and internal applications
- >  Contains our integral moisture guard (anti-wicking barrier), stopping water ingress from going up the cable into the product from incorrect IP-rated connections
- > Range of bezel finish options including stainless steel and paint finishes
- > Available with Switch, 0-10V, DMX, Dali or Mains dimmable drivers

DIMENSIONS

For fixings and dimensions please go to page 3.



WHITE LED ENGINE SPECIFICATION


Engine	 C1
Beam angles	12°, 31°, 48°
LED manufacturer	NICHIA
Colour temperature	2200K, 2700K, 3000K, 4000K, 5000K
Current [Rated output]	350mA [1.2W]500mA [1.7]700mA [2.4W]
Typical LED Circuit wattage	1.1W1.6W2.3W
Delivered lumens (L ₁₀₀)*	106138177
Delivered lm/Circuit W**	978676
Typical LED Source wattage	1W1.6W2.1W
Source LED Lm	133187206
Source lm/W	13612998
Forward voltage (V ₁₀₀)	2.8V2.9V3V
CRI	93
Colour consistency	2 SDCM
Peak intensity	554 cd
LOR	0.86
TM30	RF92 RG100
BUG rating (Sideways mounted)	B0-U2-G1
LED lifetime	L90B5 at 90,000hrs
Applications	

This data is based on LD47-C1-700-LW27-NB

*Lumen output data applies to all colour temperatures

**LED wattage includes losses associated with using a 90% efficient driver

MECHANICAL

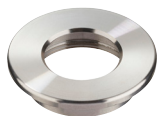
		350mA	500mA	700mA
Ambient temperature	 C1	-20°C to 55°C	-20°C to 55°C	-20°C to 55°C
○ 55°C	AUS/NZ	-20°C to 25°C		
Glass	5mm thick borosilicate			
Materials	Black anodised aluminium body, Machine finish 316 stainless steel bezel (other options available)			
IP rating	IP67			
Wiring	Comes pre-wired with 2 core 100mm lead, can be specified with up to 10m at extra cost			

ENVIRONMENTAL

TM65	Available on request		
TM66	2.7		
Repair + Refurbish	 This product is included in our Repair and Refurbish scheme. This offers customers the ability to send back products to us for repair or refurbishment to extend their life without having to buy new fittings.		
RLE (REPLACEABLE LIGHT ENGINE)	 Visit page 4 for replacement parts		

AVAILABLE FINISHES

Please refer to our finishes guide for full details



316 STAINLESS STEEL

- > Marine grade 316 Steel
- > Standard machined finish
- > Extremely durable with very high corrosion resistance
- > Passivation recommended for marine environments to prevent corrosion and build up of brown stains caused by oxidation
- > Interior & exterior use

POLISHED & PASSIVATED 316 STAINLESS STEEL

- > Marine Grade 316 Steel
- > Mirror like finish
- > Extremely durable with very high corrosion resistance
- > Passivated to extensively prolong resistance to corrosion and brown stains caused by oxidation in marine environments
- > Interior & exterior use

FLAMED SOLID BRONZE

- > Solid Bronze
- > Hand finished Flamed Bronze unique to LightGraphix
- > Extremely durable with very high corrosion resistance.
- > Please note a natural dark patination layer will form after long term exposure to the elements, the extent of this discolouration will be dependant on its location.
- > Interior & exterior use

PAINT FINISH - WET SPRAY

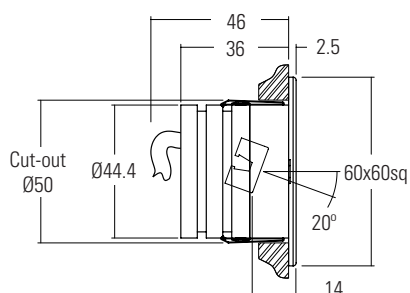
- > White (RAL 9016), Black (RAL 9005), Antique Bronze, Satin Antique Brass, Satin Brass, Anthracite Grey (7016) or any RAL colour available
- > Not recommended for footlights in high traffic areas
- > Interior & exterior use

DIMENSIONS & FIXING OPTIONS

Dimensions in mm

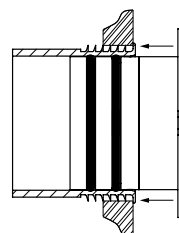
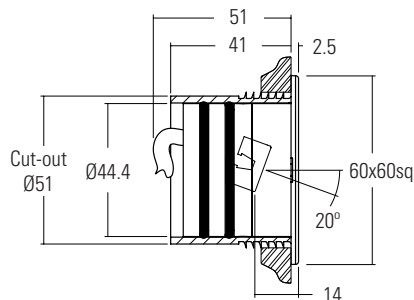
/SC Spring clip fixing

Useful for most wall mounted applications



/476 O-rings and sleeve

A more robust and water tight method of fixing, for wet areas



Design: Light IQ Project: Private Residence Product: LD47

RLE - REPLACEABLE LIGHT ENGINES



What is RLE

On the surface, RLE is LightGraphix's answer to the Circular economy question that is facing many industries at the moment. However for us, RLE is an ethos; a commitment that LightGraphix will factor in the principles of good circular design into all of its future product design. It allows us to offer luminaires that contain replaceable, energy-efficient light engines. This gives customers the ability to refurbish existing lighting installations rather than having to replace the entire luminaire. This will fall into two types of refurbishments: replaceable, and repairable.

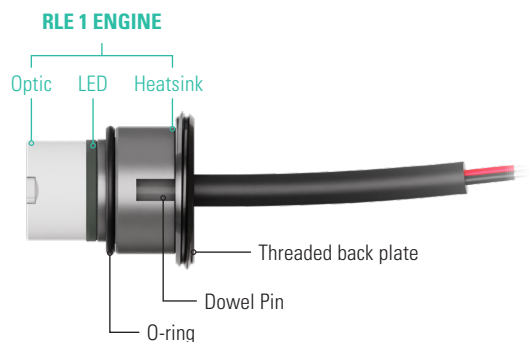
RLE Engines

Repairs can be conducted on any site worldwide, or in our factory, with a small tool. Simply swap out the singular modular LED insert, and replace it with another, along with a new optic, which are both supplied by us. The warranty provided with the product varies based on who is performing RLE repairs. There are three types of RLE engine, categorised based on the size of the product. RLE1 is the smallest, with RLE3 being the largest.



LD56 RLE REPLACEMENT PARTS

Please use the configurator below to specify your replacement engine and optic. If you are unsure of your original specifications, please check the label on your LightGraphix fitting, or get in touch with our sales team. Installation sheets will be supplied with the new components.



RLE Engine		LED Colour		Beam Angle		Accessories	
RLE1/							
RLE 1 ENGINE	RLE1/	Super Warm White (2200K)	/LW22	Narrow beam 16mm optic	RLE/OP-16/NB	Dowel pin for Oval beam orientation	RLE1/OP-16/DP
		Extra Warm White (2700K)	/LW27	Medium beam 16mm optic	RLE/OP-16/MB	O-ring	RLE/OR2
		Warm White (3000K)	/LW30	Wide beam 16mm optic	RLE/OP-16/WB	Threaded back plate	RLE/TBP
		White (4000K) - on request	/LW40	Oval beam 16mm optic	RLE/OP-16/OB		
		Cool White (5000K)	/LW50				

ORDER CODES & OPTIONS

Example: LD47-C1-500/LW30/MB/Polished & Passivated 316 Stainless Steel/476

Light Engine & Drive Current

LED Colour

Beam Angle

Finish

Fixing

Ambient temperature key: ● 55°C

○ **C1**

● 55°C _{Ta}	1.2W LED at 350mA	LD47-C1-350
● 55°C _{Ta}	1.7W LED at 500mA	LD47-C1-500
● 55°C _{Ta}	2.4W LED at 700mA	LD47-C1-700

***AUS/NZ:**
Add - AU - suffix to the product code e.g.
LD47-AU-C1-350

Super Warm White (2200K)	/LW22
Extra Warm White (2700K)	/LW27
Warm White (3000K)	/LW30
White (4000K) on request	/LW40
Cool White (5000K)	/LW50
Red	/LR
Green	/LG
Blue	/LB
Amber	/LA

12° Narrow	/NB
31° Medium	/MB
48° Wide	/WB

	316 Stainless Steel
	Polished & Passivated 316 Stainless Steel (for marine environments)
	Flamed Solid Bronze
	WET SPRAY Silver Anodised
	WET SPRAY Antique Bronze
	WET SPRAY Satin Antique Brass
	WET SPRAY Satin Brass
	WET SPRAY Black (RAL 9005)
	WET SPRAY Anthracite Grey (RAL 7016)
	WET SPRAY White (RAL 9016)
	WET SPRAY RAL

	4A
	/SC
	/476

Drivers

Use with 350mA, 500mA & 700mA constant current LED drivers
We have a wide range of LED drivers available. Please see the downloads section of our website.